

Locators

Steel / Stainless Steel, for Indexing Plungers GN 417

SPECIFICATION

Version in Steel precision casting **ST**
 Powder coated
 Black, RAL 9005, textured finish **SW**

Version in Stainless Steel precision casting **NI**
 AISI CF-8
 Blank, matte shot-blasted **GS**

INFORMATION

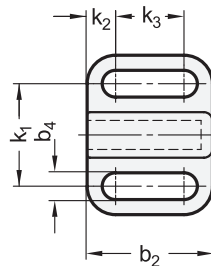
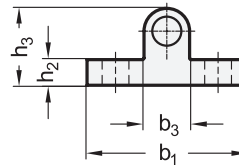
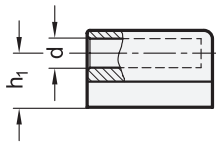
Locators GN 417.1 are used for positioning the indexing pins of indexing plungers GN 417 (see page 792). The height h_1 in each part is precisely matched. Additional design measures that would otherwise be necessary are made superfluous by the locators.

They are mounted using slots that permit adjustment parallel to the mounting hole. For example, this allows gap dimensions to be adjusted for doors or tolerance errors to be compensated. Washers make it easier to mount the parts using the slots.

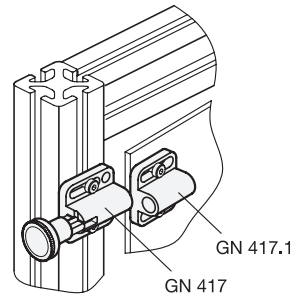


TECHNICAL INFORMATION

- Stainless Steel Characteristics (see page A26)



Application example



GN 417.1-ST

Description	d Nominal dimension	d Actual dimension +0.1	b ₁	b ₂	b ₃	b ₄ -0.2	h ₁	h ₂	h ₃	k ₁	k ₂	k ₃	⚖
GN 417.1-4-ST-SW	4	4.1	22	16.5	6	3.3	7	4	10	14	4	8.5	10
GN 417.1-5-ST-SW	5	5.1	28	22	8	4.3	9.5	4.5	13.5	18	5	12	20
GN 417.1-6-ST-SW	6	6.2	32	27.5	10	5.4	10.5	5	15.5	21	5.5	16.5	30
GN 417.1-8-ST-SW	8	8.2	34	33	12	5.4	12.5	6	18.5	23	5.5	22	50
GN 417.1-10-ST-SW	10	10.2	39	35	14.5	6.8	14.5	6	21.75	27	6	23	65

GN 417.1-NI

STAINLESS STEEL

Description	d Nominal dimension	d Actual dimension +0.1	b ₁	b ₂	b ₃	b ₄ -0.2	h ₁	h ₂	h ₃	k ₁	k ₂	k ₃	⚖
GN 417.1-4-NI-GS	4	4.1	22	16.5	6	3.3	7	4	10	14	4	8.5	12
GN 417.1-5-NI-GS	5	5.1	28	22	8	4.3	9.5	4.5	13.5	18	5	12	22
GN 417.1-6-NI-GS	6	6.2	32	27.5	10	5.4	10.5	5	15.5	21	5.5	16.5	34
GN 417.1-8-NI-GS	8	8.2	34	33	12	5.4	12.5	6	18.5	23	5.5	22	52
GN 417.1-10-NI-GS	10	10.2	39	35	14.5	6.8	14.5	6	21.75	27	6	23	70